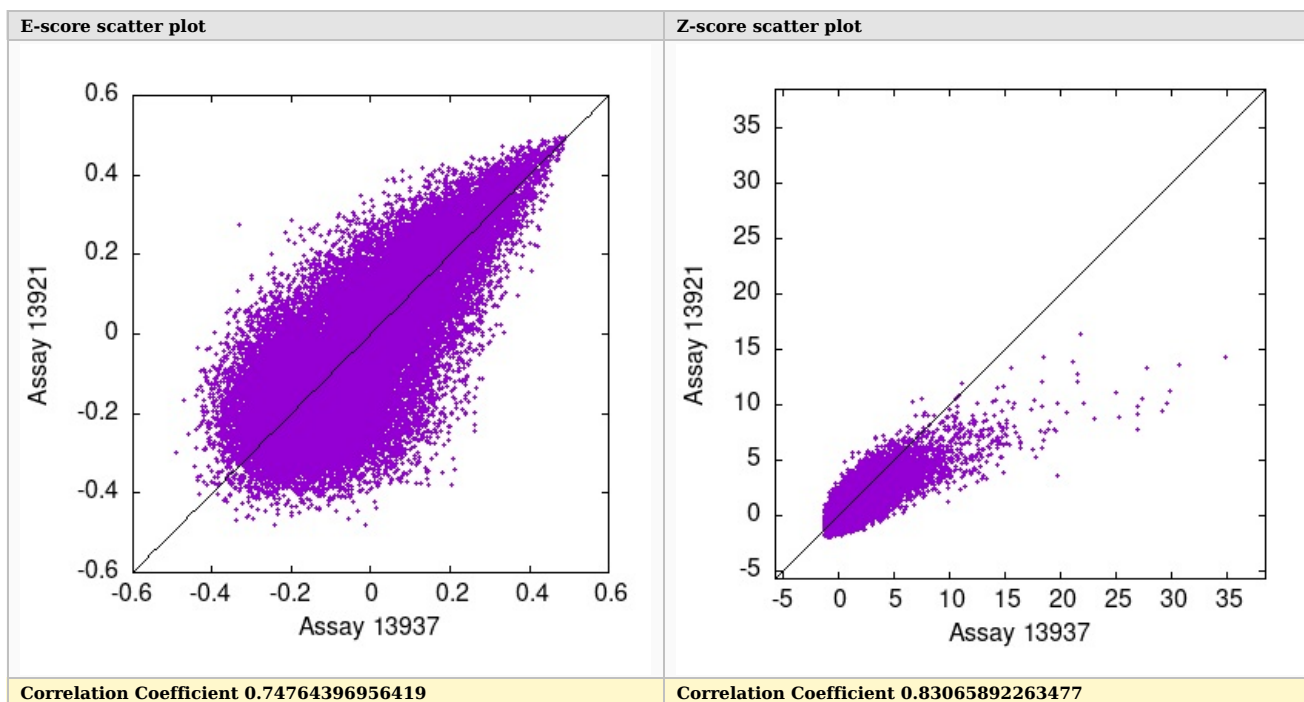


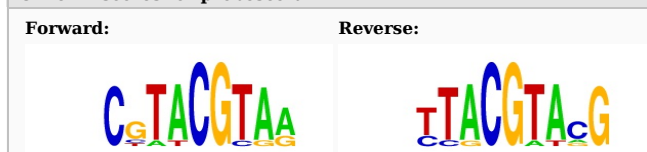
## QC report



### Top scoring motifs for Assay 13937

Protein ID: pTH14222.2 Gene: FBXL19 Domain: zf-CXXC Flag: Pass matched\_pair Array: 1M-HK

#### 8 mer E-scores for probeset 'all'



| Top 10   | Scores  | Alignment    |
|----------|---------|--------------|
| TTACGTAA | 0.49053 | --TTACGTAA-- |
| ATTACGTA | 0.48879 | ---TACGTAAT  |
| GTTACGTA | 0.48481 | ---TACGTAAC  |
| GTACGTAA | 0.48363 | --GTACGTAA-- |
| CACGTACG | 0.48237 | -CGTACGTG--  |
| TACGTAAA | 0.48182 | ---TACGTAAA  |
| GCGATCGC | 0.48166 | GCGATCGC---  |
| CGTACGTA | 0.47772 | -CGTACGTA--  |
| CTACGTAC | 0.47738 | --GTACGTAG-- |
| CTACGTAG | 0.47560 | --CTACGTAG-- |

#### 8 mer Z-scores for probeset 'all'



| Top 10   | Scores   | Alignment   |
|----------|----------|-------------|
| TTACGTAA | 34.79042 | -TTACGTAA-- |
| GTTACGTA | 30.76147 | --TACGTAAC  |
| ATTACGTA | 29.82187 | --TACGTAAT  |
| CTACGTAC | 29.51934 | -GTACGTAG-- |
| CACGTACG | 29.17913 | CGTACGTG--  |
| CGTACGTA | 27.72453 | CGTACGTA--  |
| GCTACGTA | 27.31137 | GCTACGTA--  |
| GTACGTAA | 26.90148 | -GTACGTAA-- |
| TACGTAAA | 26.90148 | --TACGTAAA  |
| CCTACGTA | 26.89397 | CCTACGTA--  |

### Top scoring motifs for Assay 13921

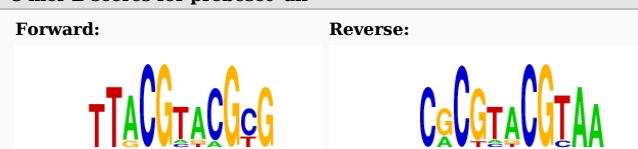
Protein ID: pTH14222.1 Gene: FBXL19 Domain: zf-CXXC Flag: Pass matched\_pair Array: 1M-ME

#### 8 mer E-scores for probeset 'all'



| Top 10   | Scores  | Alignment    |
|----------|---------|--------------|
| ACGTACGT | 0.49608 | ACGTACGT---  |
| TTACGTAA | 0.49435 | --TTACGTAA-- |
| TACGCGTA | 0.49220 | -TACGCGTA--  |
| CGTACGTA | 0.49145 | -CGTACGTA--  |
| GTTACGTA | 0.49071 | ---TACGTAAC  |
| GCGTACGC | 0.48936 | GCGTACGC---  |
| CGCGCGCG | 0.48725 | -CGCGCGCG--  |
| ATTACGTA | 0.48598 | ---TACGTAAT  |
| GCGATCGC | 0.48528 | GCGATCGC---  |
| CGTATACG | 0.48504 | -CGTATACG--  |

#### 8 mer Z-scores for probeset 'all'



| Top 10   | Scores   | Alignment      |
|----------|----------|----------------|
| ACGTACGT | 16.41565 | ---ACGTACGT--- |
| TACGCGTA | 14.30965 | -----TACGCGTA  |
| TTACGTAA | 14.29846 | -TTACGTAA----- |
| GCGTACGC | 13.93642 | ---GCGTACGC--- |
| GTTACGTA | 13.60979 | GTTACGTA-----  |
| CGCGCGCG | 13.39153 | ---CGCGCGCG--- |
| CGTACGTA | 13.36270 | --TACGTACG---- |
| ACGTACGC | 12.78945 | ---ACGTACGC--- |
| ACGATCGT | 12.12672 | ---ACGATCGT--- |
| CGCGTACG | 12.10318 | ---CGTACGCG--- |