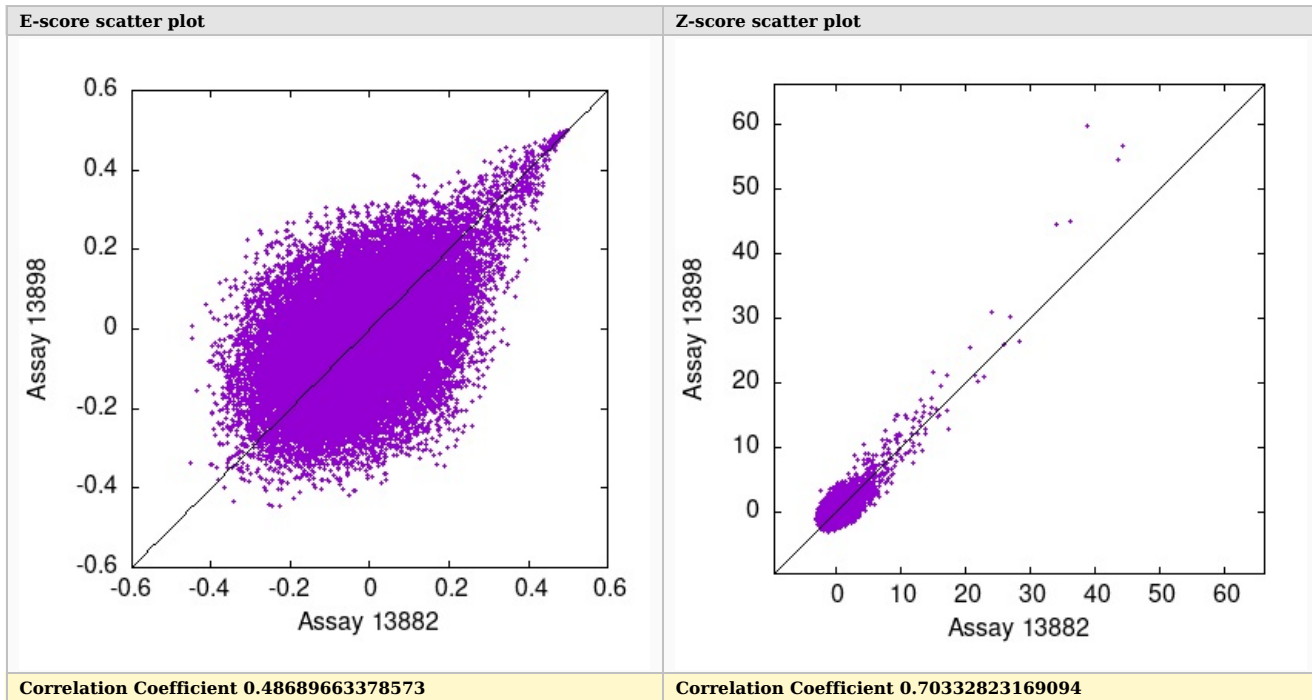


## QC report



## Top scoring motifs for Assay 13882

Protein ID: pTH14278.1 Gene: TERF1 Domain: Myb\_DNA-binding Flag: Pass\_matched\_pair Array: 1M-ME

## 8 mer E-scores for probeset 'all'

Forward:

Reverse:

AACCCCTA

TAGGGT

## Top 10

## Scores

## Alignment

AACCCTAG 0.49743  
 TAACCCTA 0.49704  
 AACCCCTAA 0.49599  
 CAACCCTA 0.49579  
 GAACCCTA 0.49496  
 AACCCCTAC 0.49342  
 TAGGGTAA 0.49232  
 AAACCCTA 0.49194  
 AGGGTTAG 0.49129  
 AACCCCTAT 0.49090

--AACCCCTAG  
 -TAACCCTA-  
 --AACCCCTAA  
 -CAACCCTA-  
 -GAACCCTA-  
 --AACCCCTAC  
 -TTACCCTA-  
 -AAACCCTA-  
 CTAACCCT--  
 --AACCCCTAT

## 8 mer Z-scores for probeset 'all'

Forward:

Reverse:

AACCCCTA

TAGGGT

## Top 10

## Scores

## Alignment

AACCCTAG 44.29370  
 TAACCCTA 43.75437  
 AACCCCTAA 38.99789  
 CAACCCTA 36.27410  
 GAACCCTA 34.22661  
 AAACCCTA 28.41413  
 AACCCCTAC 26.96859  
 AACCCCTAT 26.09133  
 TAGGGTAA 24.22745  
 CTAGGGTA 23.06647

-AACCCCTAG  
 TAACCCTA-  
 -AACCCCTAA  
 CAACCCTA-  
 GAACCCTA-  
 AAACCCTA-  
 -AACCCCTAC  
 -AACCCCTAT  
 TTACCCTA-  
 -TACCCTAG

## Top scoring motifs for Assay 13898

Protein ID: pTH14278.2 Gene: TERF1 Domain: Myb\_DNA-binding Flag: Pass\_matched\_pair Array: 1M-HK

## 8 mer E-scores for probeset 'all'

Forward:

Reverse:

AACCCCTA

TAGGGT

## Top 10

## Scores

## Alignment

AACCCTAG 0.49945  
 TAACCCTA 0.49927  
 AACCCCTAA 0.49918  
 CAACCCTA 0.49841  
 GAACCCTA 0.49836  
 TAGGGTAA 0.49669  
 AACCCCTAC 0.49625  
 AGGGTTAC 0.49455  
 AGGGTTCA 0.49395  
 AACCCCTAT 0.49373

--AACCCCTAG  
 -TAACCCTA-  
 --AACCCCTAA  
 -CAACCCTA-  
 -GAACCCTA-  
 -TTACCCTA-  
 --AACCCCTAC  
 GTAACCCT--  
 TGAACCCT--  
 --AACCCCTAT

## 8 mer Z-scores for probeset 'all'

Forward:

Reverse:

AACCCCTA

TAGGGT

## Top 10

## Scores

## Alignment

AACCCTAA 59.99796  
 AACCCCTAG 56.84303  
 TAACCCTA 54.69533  
 CAACCCTA 45.10027  
 GAACCCTA 44.51927  
 TAGGGTAA 31.05236  
 AACCCCTAC 30.25508  
 AAACCCTA 26.53109  
 AACCCCTAT 26.12791  
 AGGGTTAC 25.58657

--AACCCCTAA  
 --AACCCCTAG  
 -TAACCCTA-  
 -CAACCCTA-  
 -GAACCCTA-  
 -TTACCCTA-  
 --AACCCCTAC  
 -AAACCCTA-  
 -AACCCCTAT  
 GTAACCCT--